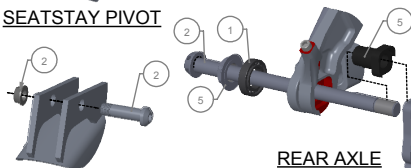


B.O.M. SPARTAN ALUMINUM		
ITEMS	#SERVICE KIT	DESCRIPTION
1	KFC18003	BEARING KIT SPARTAN 2018+
2	KFC18015-01	SPARTAN ALLOY SHOCK BOLT BLACK
3	KFC18016	CABLE GUIDE KIT SPARTAN ALLOY
4	KFC18017	PROTECTOR KIT SPARTAN CARBON
5	KFC18018-01	PIVOT KIT SHAFT SPARTAN ALLOY BLACK
6	KFC11021	DERAILLEUR HANGER SPLIT PIVOT 12x142/148

## SEATSTAY PIVOT

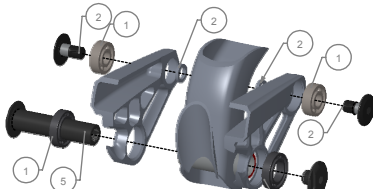


## REAR AXLE

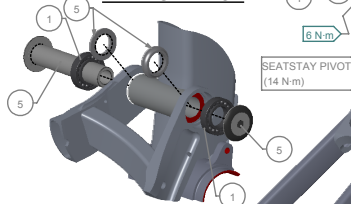


**WARNING:**  
MAKE SURE TO CAREFULLY READ THE ASSEMBLY INSTRUCTIONS AND CLEANING INSTRUCTIONS NOTES ON NEXT PAGE.

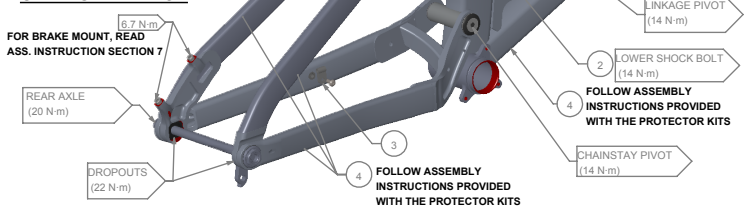
## SHOCK HARDWARE



## LINKAGE PIVOT



## CHAINSTAY PIVOT



#### **ASSEMBLY INSTRUCTIONS:**

- 1- THOROUGHLY CLEAN THE INTERIOR OF EACH BEARING HOUSING TO REMOVE ANY DIRT OR OLD GREASE;
- 2- APPLY HIGH QUALITY WATERPROOF GREASE ON THE INSIDE FACE AND INSIDE DIAMETER OF ALL BEARING HOUSINGS BEFORE PRESS-FIT;
- 3- APPLY HIGH QUALITY WATERPROOF GREASE TO ALL PIVOT PARTS THAT CONTACT WITH THE INNER DIAMETER OF THE BEARINGS.
- 4- APPLY HIGH QUALITY WATERPROOF GREASE TO ALL NON-THREADED METAL-TO-METAL INTERFACES (EX.: PLANAR FACE OF THE PIVOT SPACER THAT CONTACTS THE LATERAL FACES OF THE FRONT TRIANGLE WL PIVOT). THESE INSTRUCTIONS ALSO APPLY TO THE SHOCK ASSEMBLY;
- 5- UNLESS OTHERWISE SPECIFIED, APPLY BLUE LOCTITE 242 ON ALL THREADS BEFORE ASSEMBLY TO THE SPECIFIED TORQUE VALUE;
- 6- TO PREVENT DAMAGE TO THE FRAME, THE SEATPOST MUST HAVE A MINIMUM INSERTION IN THE SEAT TUBE.

#### **CARBON FRAME:**

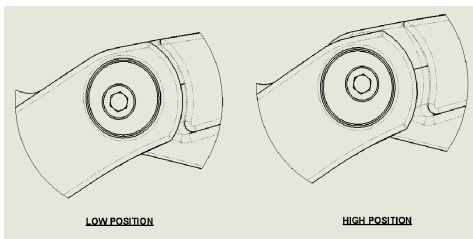
SMALL / MEDIUM - 70mm INSERTION  
LARGE / X-LARGE - 100mm INSERTION

#### **ALUMINIUM FRAME:**

SMALL / MEDIUM / LARGE / X-LARGE - 100mm INSERTION

7- **REAR BRAKE MOUNT:** DURING THE ASSEMBLY, YOU WILL NOTICE THAT THE NATURAL BEND OF THE BRAKE CABLE MAY COME IN CONTACT WITH THE WHEEL'S SPOKES OR THE FRAME. SO WE HIGHLY SUGGEST TO GIVE A FULL ROTATION OF THE BRAKE BEFORE MOUNTING IT. IT WILL GIVE A TWIST TO THE CABLE AND PREVENT POTENTIAL CONTACTS.

8- **FRG ADJUSTABLE:** THIS DESIGN ALLOWS RIDERS TO CHOOSE BETWEEN A LOW OR HIGH POSITION. WITH FRG ADJUSTABLE TECHNOLOGY, YOU CAN FINE-TUNE YOUR RIDE TO PERSONAL TASTES OR SPECIFIC TRAIL TYPES USING A FLIP-FLOP PIVOT MECHANISM THAT SLIGHTLY CHANGES THE BIKE'S GEOMETRY AS SHOWN BELOW.



#### **CLEANING INSTRUCTIONS:**

IT IS A WELL KNOWN FACT THAT A CLEAN BIKE PERFORMS BETTER. DEVINCI RECOMMENDS WASHING YOUR BIKE REGULARLY USING A BRUSH AND SOAPY WATER. HOWEVER, DEVINCI DO NOT RECOMMEND THE USE OF A PRESSURE WASHER, SINCE THIS MAY SIGNIFICANTLY REDUCE THE SERVICE LIFE OF BALL BEARINGS. EVEN THOUGH OUR BALL BEARINGS ARE EQUIPPED WITH HIGH QUALITY DOUBLE-LIP SEALS, HIGH PRESSURE WATER CAN STILL PASS THESE SEALS AND REMOVE THE GREASE INSIDE THE BEARING. THIS MAY CAUSE PREMATURE CORROSION AND WEAR OF THE BALL BEARINGS.

# SPARTAN 27

Carbon / Aluminum

2018 - Current

## Frame

<i>Axle Length:</i>	179 mm
<i>Rear Hub Spacing:</i>	12 x 148 mm
<i>Chain Guide:</i>	ISCG 05
<i>Recommended Fork Offset:</i>	37 mm, 46 mm
<i>Seat Post Diameter:</i>	31.6 mm
<i>Seat Collar Diameter:</i>	37 mm / 35 mm
<i>Upper Headset:</i>	ZS 44/28
<i>Lower Headset:</i>	ZS 56/40
<i>Rear Brake:</i>	Direct Mount 160 mm / MAX 200mm

## Drivetrain

<i>Crankset type:</i>	Boost 1X
<i>Minimum Q-Factor:</i>	167.8 mm
<i>Chain Line:</i>	52 mm
<i>Minimum Chain Ring:</i>	28T
<i>Maximum Chain Ring:</i>	36T (38T in low position)
<i>Bottom Bracket:</i>	PF 92.5 mm

## Rear Shock

<i>Dimension:</i>	205 mm x 65 mm
<i>Piggy Back Compatibility:</i>	YES
<i>Coil Shock Compatibility:</i>	YES
<i>Upper Hardware:</i>	Trunnion
<i>Lower Hardware:</i>	10 mm x 20 mm

For more information contact [service@devinci.com](mailto:service@devinci.com)